

ANNUAL EVALUATION 2014-15

STD IX

Biology

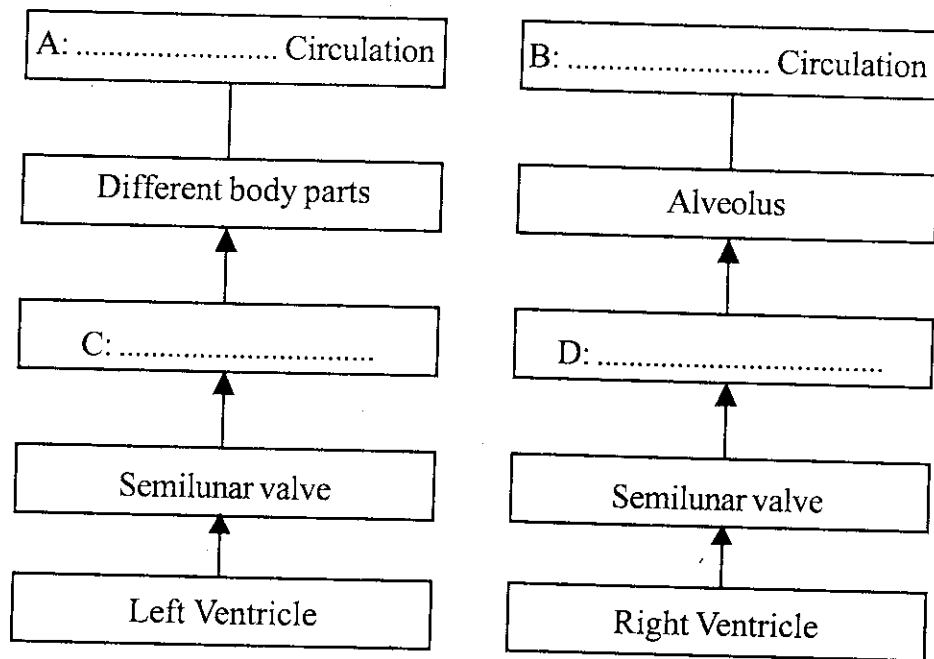
Time: 1½ Hours

Total Score: 40

Instructions:

- 15 minutes is given as cool-off time.
- This time is to be spent for reading the question paper.
- You are not supposed to write anything during the cool-off time.
- Attempt questions according to instructions.

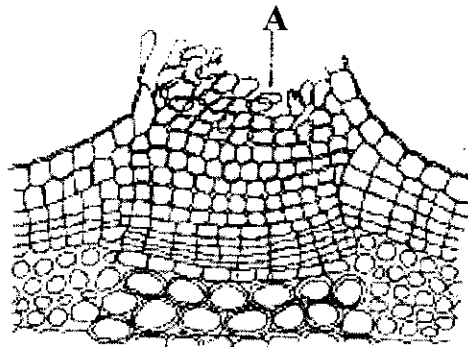
		Score
1.	Find the word pair relation and fill in the blanks.	(2)
	a) Vitamin B ₁₂ : Megaloblastic anemia	
 : Rickets	
	b) Xanthophyll : Yellow	
 : Yellowish orange	
2.	Find the odd one and write the common feature of the others.	(2)
	a) Bronchus, Pleura, Pericardium, Trachea	
	b) Vertebral column, Pelvic girdle, Ribs, Skull	
3.	Name the enzymes and the related glands which perform the function given below.	(2)
	a) Partially converts starch into maltose.	
	b) Proteins are broken down into peptides.	
4.	Scientific waste treatment is necessary for social health. Prepare a poster to give awareness to public on this.	(2)
5.	Two types of blood circulation in man is illustrated. Complete the illustration suitably based on the indicators given.	(2)



Hints: ● A, B- Types of circulation, ● C, D- Blood vessels

6. Observe the diagram.

(2)



- a) Name the part labelled 'A'.
- b) Write the function performed by this part in mature stem.

7. Write reasons for each of the following statements.

(3)

- a) Female bees have 32 chromosomes and male bees have only 16.
- b) Meiosis II is similar to mitosis.
- c) Identical twins will be of the same sex.

8. Certain statements related with the process of cell division are given below. Arrange them in correct order.

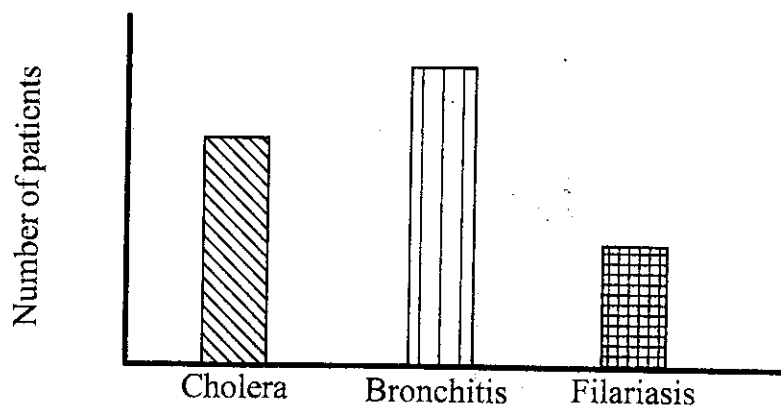
(2)

- Chromatids separate.
- Spindle fibres are formed.
- Nuclear membrane reappears.
- Centrosome divides.

9. Different types of plant movements are given below. Name the tropic movement indicated by each of them. (2)
- Pollen tube grows towards the ovary.
 - Creepers climb around supporting plants.
 - Coconut plants growing along the border of paddy fields bend towards the fields.
 - Roots grow towards water.
10. "Why don't coconut trees increase in girth like mango trees?". Give suitable explanation to Meenu's doubt. (2)
11. Certain microorganisms and their locomotor organs are given in the following box. Make suitable pairs. (3)

Amoeba, Cilia, Paramecium, Euglena, Pseudopodia, Flagella
--

12. IVF (In vitro fertilization) is one which is used widely as a solution to sterility in men and women. Explain how this technology helps in the birth of test tube babies. (4)
13. An important information regarding the spread of diseases in a particular area is obtained in a health survey. (3)



- Name the disease that affected most number of people. Give the reason.
- Write measures to prevent the spread of cholera.
- Name the mosquito that spreads Filariasis. How can the spread of this disease be prevented?

14. Certain nutritional deficiency diseases are given in the following table. Analyse and complete the table suitably. (2)

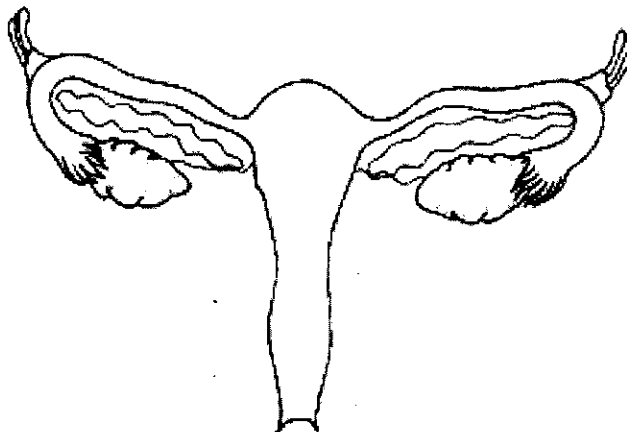
Disease	Cause	Symptom
Kwashiorkor	A:	B:
Goitre	C:	Thyroid gland swells up
Marasmus	Deficiency of protein	D:

15. Analyse the following statements and arrange them in the given table suitably. (3)

- Air pressure in the thoracic cavity increases.
- Diaphragm lowers.
- The air pressure in the thoracic cavity decreases.
- Thoracic wall contracts.
- Thoracic wall expands.
- Diaphragm returns to the original position.

Inspiration	Expiration

16. Copy the diagram. Identify the parts based on the hints and label them. (4)



- a) The organ where embryo grows.
- b) The part in which fertilization takes place.
- c) The part which produces the female sex hormones and ovum.